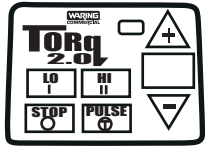


WARING COMMERCIAL®

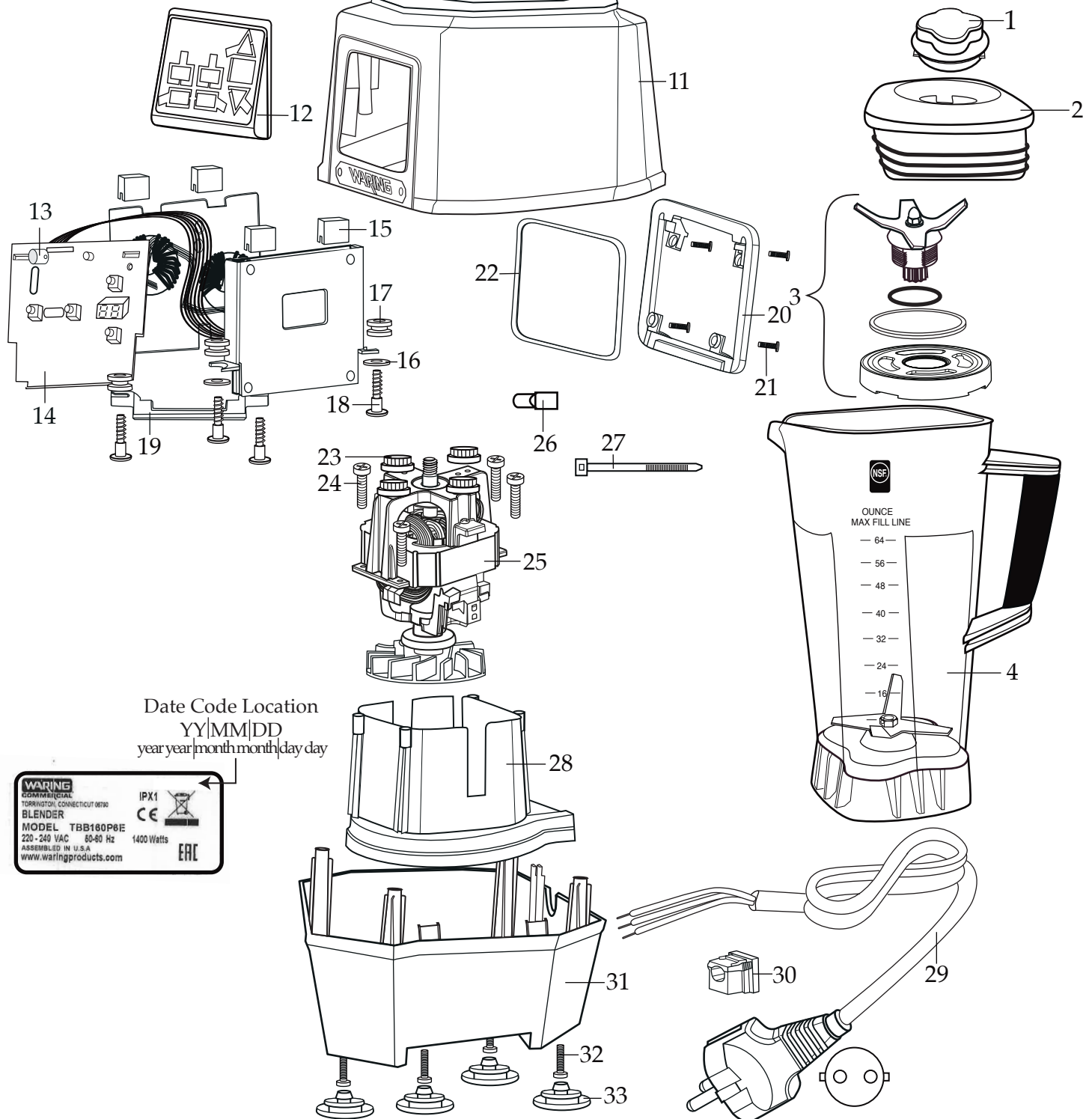
Europe **TORq 2.0** Blender
with Electronic Keypad, Timer
& 64 oz. Copolyester Container

TBB160P6E

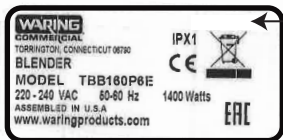


035872

Control Panel Overlay



Date Code Location
YY|MM|DD
year|year|month|month|day|day



Illustration#	Part#	Description
1	026425-E	Eastman Jar Lid Cover
2	026424-V	Vinyl Jar Lid
3	031060	Blending Assembly Kit
4	026423-E 503347	64 oz. Container ONLY 64 oz. Container with Blending Assembly
5	035885	Jar Pad
6	035085	Hole Plug (4 required)
7	034275	Sems (4 required)
8	034273	B Gasket (4 required)
9	037034	Drive Coupling 2 Gen.
10	037033	Coupling Washer
11	503609	Top Housing with Badge
12	035234	Control Housing Front Bezel
13	035253	LED Lens
14	035165	TBB160 230 volt Control Panel
15	034900	PCB Cushion (4 required)
16	013604	Washer (4 required)
17	034904	Rubber Grommet (4 required)
18	034902	Sems (4 required)
19	035894	Control Board Bracket
20	035237	Control Housing Back Bezel
21	035090	Screw (4 required)
22	038576	Top Housing Control Seal
23	034272	A Gasket (4 required)
24	034274	Screw (4 required)
25	035816	Chiaphua Motor No Sensor
26	012409 019123	Small Crimp Connectors (3 required) Large Crimp Connector (2 required)
27	013731	Cable Ties (8 required)
28	503483	Motor Housing with Dampeners
29	017948	Cordset

Illustration#	Part#	Description
30	033619	Strain Relief
31	503480 035079	Bottom Housing with Feet Bottom Housing
32	034274	Screw (4 required)
33	035088	Foot (4 required)

